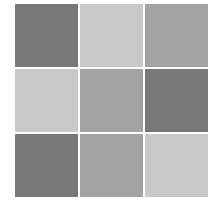


CONCRETE SERIES



V3
High degree of
colour variation

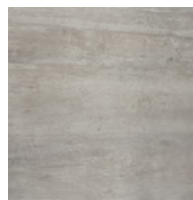
AVAILABLE COLOURS



Calce (White)



Fango (Sand)



Malta (Grey)

IN-STOCK

	18"x36" 45cmx90cm Rectified	12"x24" 30cmx60cm Rectified	18"x36" 45cmx90cm	12"x24" 30cmx60cm
	MATTE		POLISHED	
Calce (White)	EMCO-C1836	EMCO-C1224	EMCO-C1836P	EMCO-C1224P
Fango (Sand)	EMCO-F1836	EMCO-F1224	EMCO-F1836P	EMCO-F1224P
Malta (Grey)	EMCO-M1836	EMCO-M1224	EMCO-M1836P	EMCO-M1224P

SPECIAL ORDER¹

MATTE Rectified 24"x24" 60cmx60cm	POLISHED 24"x24" 60cmx60cm	MOSAIC 2"x2" pieces/sheet 12"x12" 30cmx30cm
--	----------------------------------	--

TECHNICAL INFO

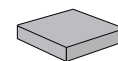


* Matte only

SPECIAL PIECES FOR ORDER²



Battiscopa



Angolare



Gradone

¹ Special order sizes and finishes available in most colours. Please consult with a sales representative for more information (availability dependent on order quantity).

² For colours and sizes please consult with a sales representative.



C&S TILE

Distributors

CERAMSTONE® COLLECTION | www.ceramstone.com
2820 INGLETON AVENUE, BURNABY BC
P: 604-435-4431 || F: 604-437-7687
Toll Free CAN: 1.800.663.6510 || USA: 1.800.663.8043

Industrial