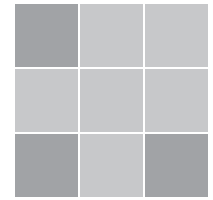
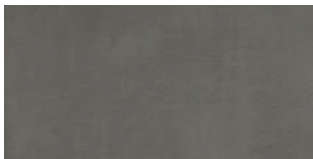


# FACTORY SERIES

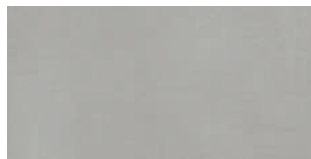


**V2**  
Moderate degree  
of colour variation

## AVAILABLE COLOURS



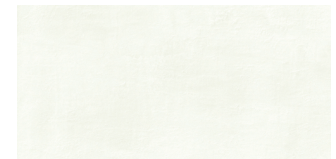
Black



Grey



Smoke



White

## IN-STOCK

	12"x24" 30cmx60cm Rectified	4"x12" 10cmx30cm Rectified
	<b>MATTE</b>	
Black	GAFA-B1224	GAFA-B412
Grey	GAFA-G1224	GAFA-G412
Smoke	GAFA-S1224	GAFA-S412
White	GAFA-W1224	GAFA-W412

## SPECIAL ORDER<sup>1</sup>

<b>MATTE</b> Rectified	<b>HEXAGON MOSAIC</b> 2"pcs/sheet	<b>MOSAIC</b> 2"x2" pcs/sheet	<b>1x3 MOSAIC</b> 1"x3" pcs/sheet
24"x48" 60cmx120cm	10"x12" 26cmx30cm	12"x12" 30cmx30cm	12"x12" 30cmx30cm
12"x48" 30cmx120cm			
40"x40" 100cmx100cm			
24"x24" 60cmx60cm			
12"x12" 30cmx30cm			
8"x8" 20cmx20cm			

## TECHNICAL INFO

<b>C</b> COMMERCIAL	<b>RE</b> RESIDENTIAL
<b>DCoF</b> DYNAMIC COEFFICIENT OF FRICTION $\geq 0.42$	<b>R<sup>10</sup></b> SLIP RESISTANT
<b>FP</b> FROST PROOF	

## SPECIAL PIECES FOR ORDER<sup>2</sup>



Battiscopa



Angolare

<sup>1</sup> Special order sizes and finishes available in most colours. Please consult with a sales representative for more information (availability dependent on order quantity).

<sup>2</sup> For colours and sizes please consult with a sales representative.