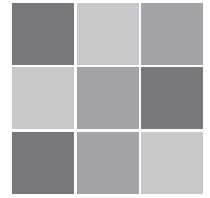
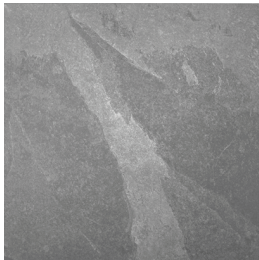


BRAZILIAN SLATE SERIES

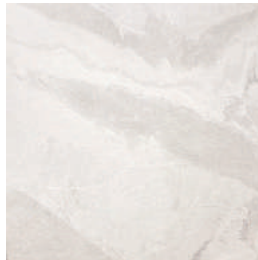


V3
High degree of colour variation

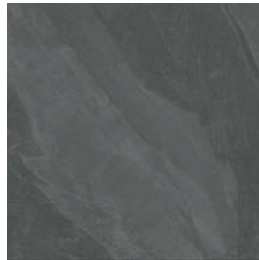
AVAILABLE COLOURS



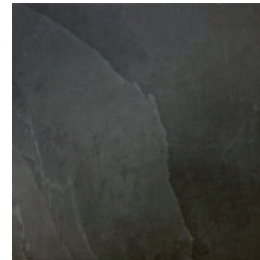
Elephant Grey



Oxford White



Pencil Grey



Rail Black



Silk Grey

IN-STOCK

	24"x48" 60cmx120cm Rectified	24"x24" 60cmx60cm Rectified
	MATTE	
Elephant Grey	UN8470	UN8455
Oxford White	UN8468	UN8453
Pencil Grey	UN8471	UN8456
Rail Black	UN8472	UN8457
Silk Grey	UN8469	UN8454

SPECIAL ORDER¹

MATTE
Rectified
32"x32"
80cmx80cm
12"x24"
30cmx60cm
6"x24"
15cmx60cm
3"x12"
7.4cmx30cm
Chevron
4.7"x21"
12cmx53cm

MATTE MOSAIC
2"x2" pieces/sheet
12"x12"
30cmx30cm
3.5"x4.5" Hexagon
10"x13"
25cmx34cm
MATTE PLANK
Mixed 24" pieces/sheet
12"x24"
30cmx60cm

GRIP
Rectified
24"x24"
60cmx60cm
2CM
Rectified
24"x48"
60cmx120cm

TECHNICAL INFO



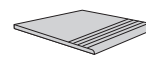
SPECIAL PIECES FOR ORDER²



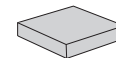
Battiscopa



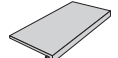
Elemento A L



Gradino



Gradone Angolare
Costa Retta



Gradone Costa
Retta

¹ Special order sizes and finishes available in most colours. Please consult with a sales representative for more information (availability dependent on order quantity).

² For colours and sizes please consult with a sales representative.



C&S TILE

CERAMSTONE® COLLECTION | www.ceramstone.com
2820 INGLETON AVENUE, BURNABY BC
P: 604-435-4431 || F: 604-437-7687
Toll Free CAN: 1.800.663.6510 || USA: 1.800.663.8043

Rustic & Classic